

2000



# Amazing Oak

1900



1928 - Walt Disney's first major cartoon, Steamboat Willie featured Mickey Mouse.



1916 - Easter Rising put down, followed by martial law and execution of 15 rebel leaders.

1800



1903 - In the United States, the Wright brothers made the first powered aircraft flight.

1700



1665 - English scientist Isaac Newton discovered gravity.

1600



1789 - French Revolution followed by Napoleon's emergence as a leading military figure until 1815.

1500



1845 - Blight in potato harvest marked the beginning of the Great Famine in Ireland.

1400



1347 - Black Death reached Europe from China. Almost one third of Europe's population wiped out.

1300



1014 - Brian Ború, King of Ireland, was killed as his army defeated the Vikings at the Battle of Clontarf.

1200

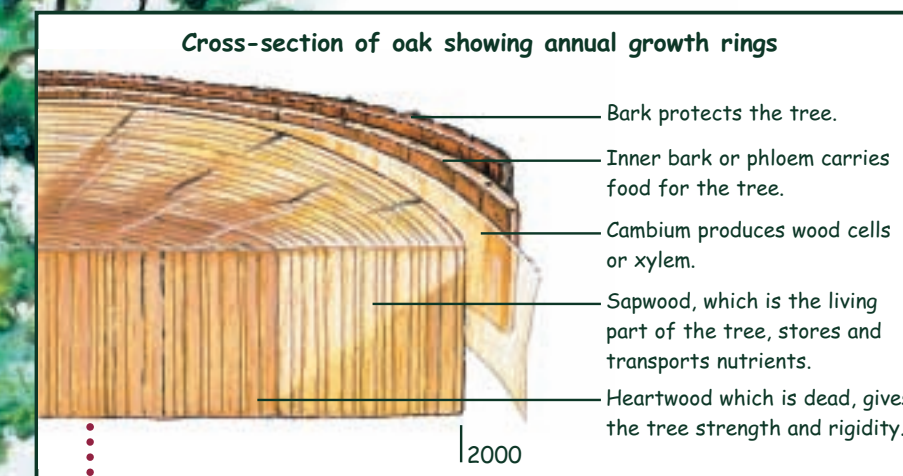


1492 - Columbus arrived in America.



1541 - Henry VIII declared "King of Ireland". His forestry policy, continued by Elizabeth I, assisted in the destruction of Irish forests.

1100



Cross-section of oak showing annual growth rings

Bark protects the tree.  
Inner bark or phloem carries food for the tree.  
Cambium produces wood cells or xylem.  
Sapwood, which is the living part of the tree, stores and transports nutrients.  
Heartwood which is dead, gives the tree strength and rigidity.

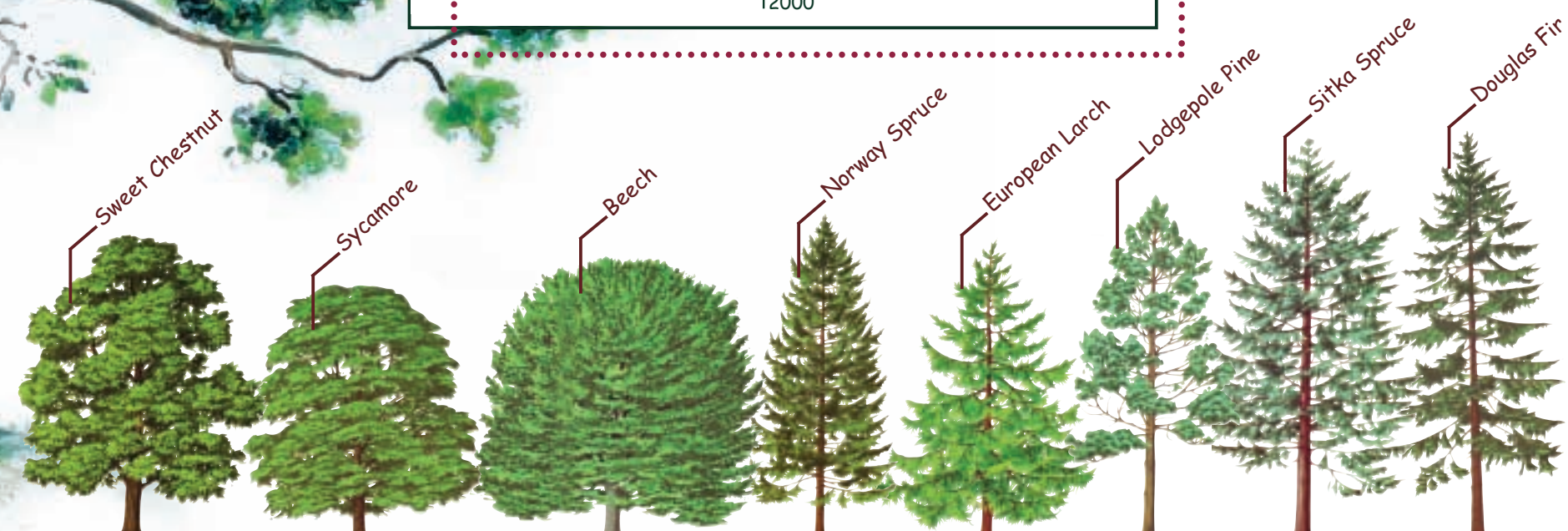


1969 - Neil Armstrong was the first man on the moon.

1000



NATIVE SPECIES



INTRODUCED SPECIES